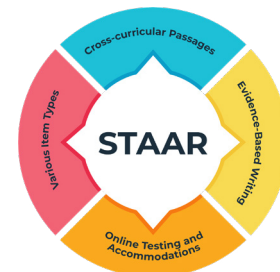


# STAAR Spring

## RLA Extended Constructed Response Rubrics

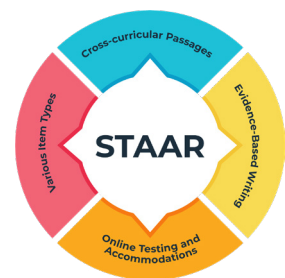


Development and Organization of Ideas Trait	3	2	1	0
<b>Argument/ Opinion (Grades 3-5)</b> <b>Controlling Idea/Thesis (Grades 6-8, English I &amp; II)</b>	<b>Clear and Fully Developed</b> <ul style="list-style-type: none"> <li>Clearly Identifiable</li> <li>Focus is Consistent</li> <li>Response Unified and Easy to Follow</li> </ul>	<b>Present and Partially Developed</b> <ul style="list-style-type: none"> <li>Presented but Not Clearly Identifiable or Fully Developed</li> <li>Focus is Inconsistent</li> <li>Response Not Easy to Follow</li> </ul>	<b>Evident but not Developed</b> <ul style="list-style-type: none"> <li>Not Appropriately Developed</li> </ul>	<ul style="list-style-type: none"> <li>May be Evident</li> </ul>
<b>Organization</b>	<b>Effective</b> <ul style="list-style-type: none"> <li>Purposeful Structure</li> <li>Effective Introduction and Conclusion</li> <li>Appropriate and Supports Development of Idea</li> <li>Sentences, Paragraphs, or Ideas Connected Purposefully and Highly Effectively</li> </ul>	<b>Limited</b> <ul style="list-style-type: none"> <li>Purposeful but Inconsistent Structure</li> <li>Introduction and Conclusion Present</li> <li>Does Not Support the Logical Development of Ideas</li> <li>Lacking Sentence-to-Sentence Connections and Clarity</li> </ul>	<b>Minimal and/or Weak</b> <ul style="list-style-type: none"> <li>Introduction or Conclusion May be Present</li> <li>Does not Support Logical Development of Ideas</li> <li>Not Appropriate to the Task</li> </ul>	<ul style="list-style-type: none"> <li>Lacks an Introduction and Conclusion</li> <li>Structure is Not Evident</li> </ul>
<b>Evidence</b>	<b>Specific, Well Chosen, and Relevant</b> <ul style="list-style-type: none"> <li>Text-Based</li> <li>Clearly Explained</li> <li>Consistently Supports Argument/ Opinion</li> <li>For Paired Texts, Evidence Drawn from Both Texts</li> <li>Reflective of a Thorough Understanding of the Writing Purpose</li> </ul>	<b>Limited and may Include Some Irrelevant Information</b> <ul style="list-style-type: none"> <li>Some Text-Based Evidence</li> <li>Insufficiently Explained or Irrelevant</li> <li>For Paired Texts, Evidence Drawn from at least one Text</li> <li>Reflective of a Partial Understanding of the Writing Purpose</li> </ul>	<b>Insufficient and/or Mostly Irrelevant</b> <ul style="list-style-type: none"> <li>Little is Text-Based</li> <li>Mostly Extraneous and/or Repetitious</li> <li>Explanations are insufficient and Vaguely Related to the Task</li> <li>Reflective of a Limited Understanding of the Writing Purpose</li> </ul>	<ul style="list-style-type: none"> <li>Not Provide or is Irrelevant</li> <li>Reflective of a Lack of Understanding of the Writing Purpose</li> </ul>
<b>Expression of Ideas</b>	<b>Clear and Effective</b> <ul style="list-style-type: none"> <li>Word Choice is Specific, Purposeful, and Enhances the Response</li> <li>Almost all Sentences and Phrases are Crafted to Convey the Writer's Ideas, Contribute to the Overall Quality of the Response</li> </ul>	<b>Basic</b> <ul style="list-style-type: none"> <li>Word Choice is general and Imprecise, Does Not Clearly Convey the Writer's Ideas</li> <li>Sentences and Phrases are Ineffective and Interfere with the Writer's Intended Meaning and Weaken the Message</li> </ul>	<b>Ineffective</b> <ul style="list-style-type: none"> <li>Word Choice is Vague or Limited and Impedes the Quality and Clarity of the Essay</li> <li>Sentences and Phrases are Ineffective, Interfere with the Writer's intended Meaning, and Impact the Strength and Clarity of the Message</li> </ul>	<ul style="list-style-type: none"> <li>Unclear and/or Incoherent</li> </ul>

A Score Point of "0" in the Development and Organization of Ideas trait will automatically earn the response a score point of "0" in the Conventions trait.

# STAAR Spring

## RLA Extended Constructed Response Rubrics



<div> Conventions Trait <ul style="list-style-type: none"> <li>Sentence Structure</li> <li>Punctuation</li> <li>Capitalization</li> <li>Grammar</li> <li>Spelling</li> </ul> </div>			
	2	1	0
Command	<ul style="list-style-type: none"> <li>Consistent</li> <li>Correct Use of Grade-Level Conventions</li> </ul>	<ul style="list-style-type: none"> <li>Inconsistent</li> <li>Limited Use of Correct Grade-Level Conventions</li> </ul>	<ul style="list-style-type: none"> <li>Little to None</li> <li>Limited Use of Correct Grade-Level Conventions</li> </ul>
Errors	<ul style="list-style-type: none"> <li>Few</li> <li>Do Not Impact the Clarity of the Writing</li> </ul>	<ul style="list-style-type: none"> <li>Several</li> <li>Reader can still Understand the Writer's Thoughts</li> </ul>	<ul style="list-style-type: none"> <li>Many</li> <li>Impact the Clarity of the Writing and the Reader's Understanding</li> </ul>



Watch and learn about the STAAR reading and writing changes happening this year.

[esc13.info/staar-readingwriting](https://esc13.info/staar-readingwriting)



Watch the informative video about this Technology Enhanced Item (TEI)

[esc13.info/staar-extendedresponse](https://esc13.info/staar-extendedresponse)